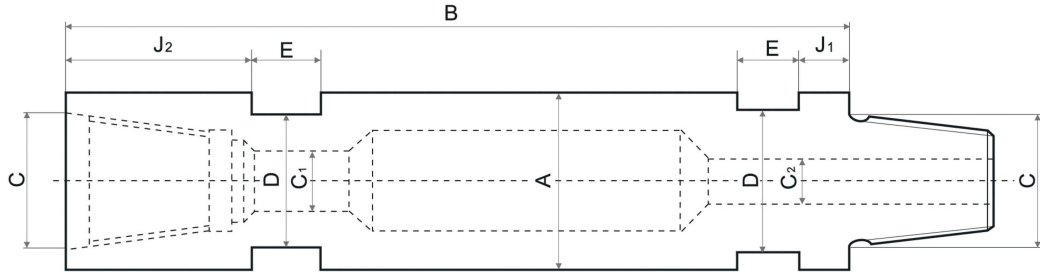


DTH PIPE



A OD (mm)	C C Tool joints			J Length shoulder to flat		D Across flat (mm)	Allowed pull down (kNm)	Approx weight (3m long/kgs)	E Width spanner flat (mm)
	Connection	C1	C2	J1	J2				
Φ76	API 2 3/8"REG	25.4	38.1	16	90.5	65	5.4	26.6	38.1
Φ89	API 2 3/8"REG	28.6	38.1	11.1	76.2	69.8	11.2	53.4	60.3
Φ102	API 3 1/2"REG	44.4	57.1	15.8	90.5	63.5	14.2	53.1	50.8
Φ114	API 3 1/2"REG	38.1	57.1	15.8	69.8	92.2	22.2	77.4	69.8
Φ127	API 3 1/2"REG	44.4	57.1	12.7	95.2	120.6	47	114	50.8
Φ140	API 3 1/2"REG	44.4	57.1	12.7	95.2	120.6	47	114	50.8
Φ152	API 4 1/2"REG	76.2	85.7	19	120.6	130.1	52.9	127	60.3



KEMAICO USA CORPORATION

Address: 300 Knightsbridge Pkwy Ste.113 , Lincolnshire , IL 60069

Tel: 1-847-9136878 Fax:1-847-9136879

Email: office@kemaico.com info@kemaico.com

Web: www.kemaico.com

